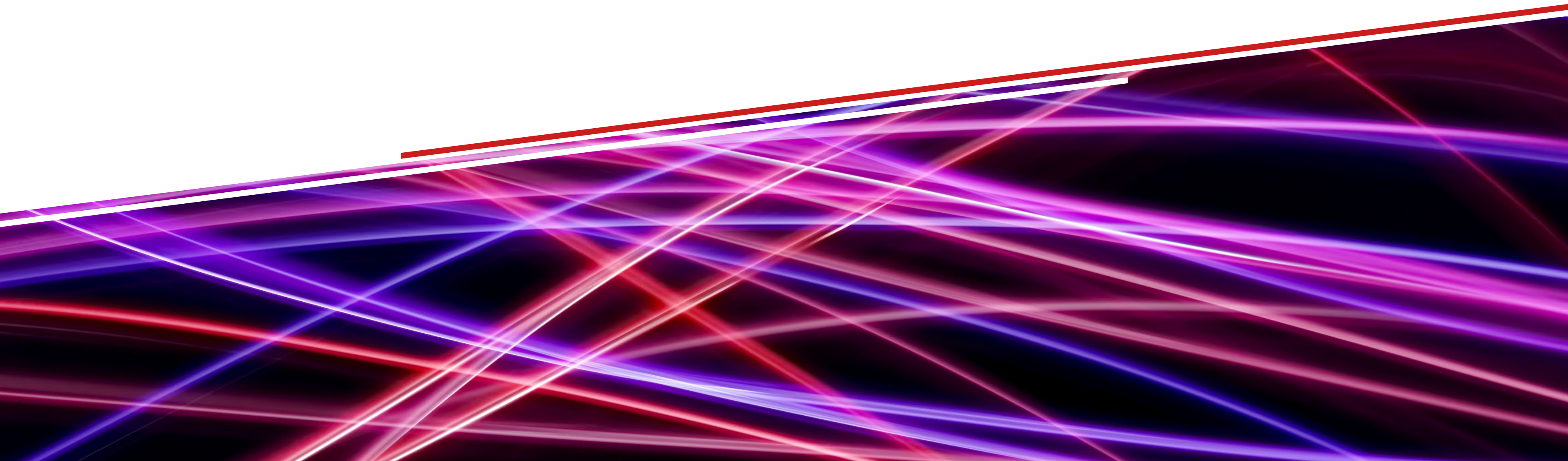


ACE 2024

# Supporting future Business with cutting-edge PLM Capabilities

Marcellus Menges

March 6<sup>th</sup> 2024



# USING "SENSOR INTELLIGENCE." IN A SMART WAY

AS A CUSTOMER, OUR SOLUTIONS ARE OPEN TO YOU  
AND TO YOUR SYSTEMS



Detecting



Identifying



Measuring



Protecting



Integrating



Controlling



# Process automation business fields

## Overview



Building materials



Chemicals, petrochemicals,  
and refineries



Maritime



Metal and steel



Mining



Oil and gas



Power



Waste and recycling

# Factory Automation Segment

Focus applications



Automotive and parts suppliers



Battery



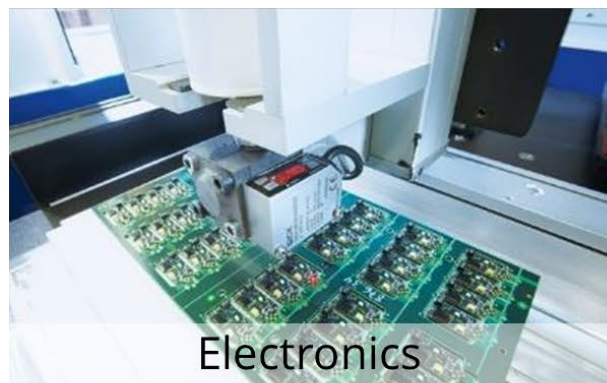
Drives and Controls



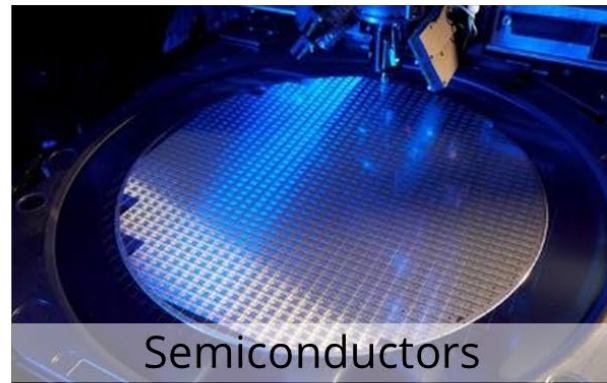
Print



Tire



Electronics



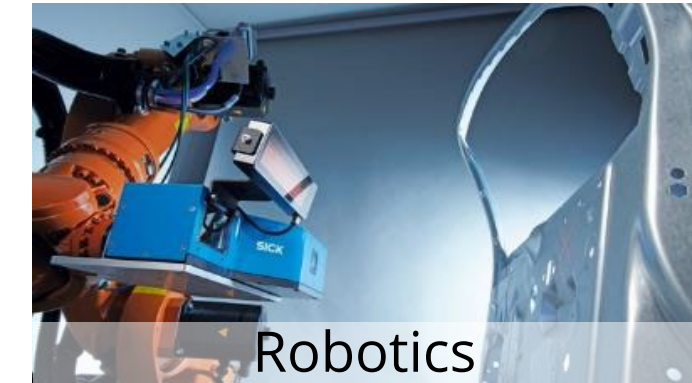
Semiconductors



Handling and assembly technology



Wood



Robotics



Consumer goods



Rubber and plastics



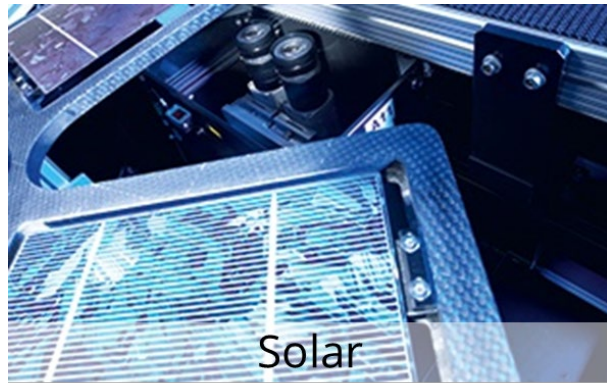
Food and beverage



Pharma and cosmetics



Packaging



Solar



Stone, ceramic, glass



Machine tools



Wind energy

# Logistics automation business field

Focus applications



Airport



Courier, express, parcel and postal



Cranes



Industrial vehicles



Mobile automation



Ports



Retail and warehousing



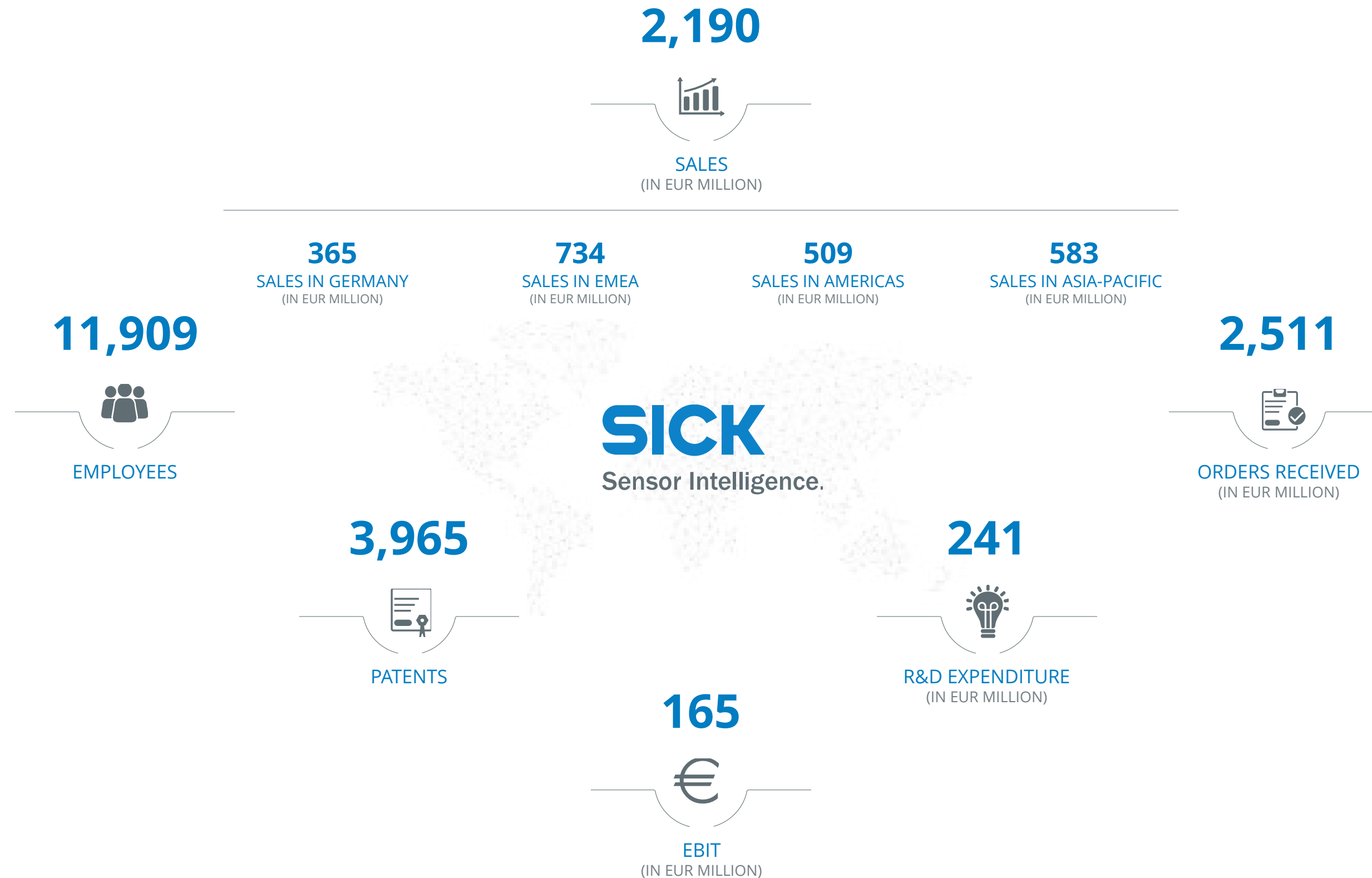
Storage and conveyor



Traffic

# SICK at a glance

Key figures (fiscal year 2022)



# What do we see looking into the future?

Navigating a fleet in a complex environment IN FOG!

? Shortage of skilled worker

? Wars

? Shortage of natural resources

? Climate change

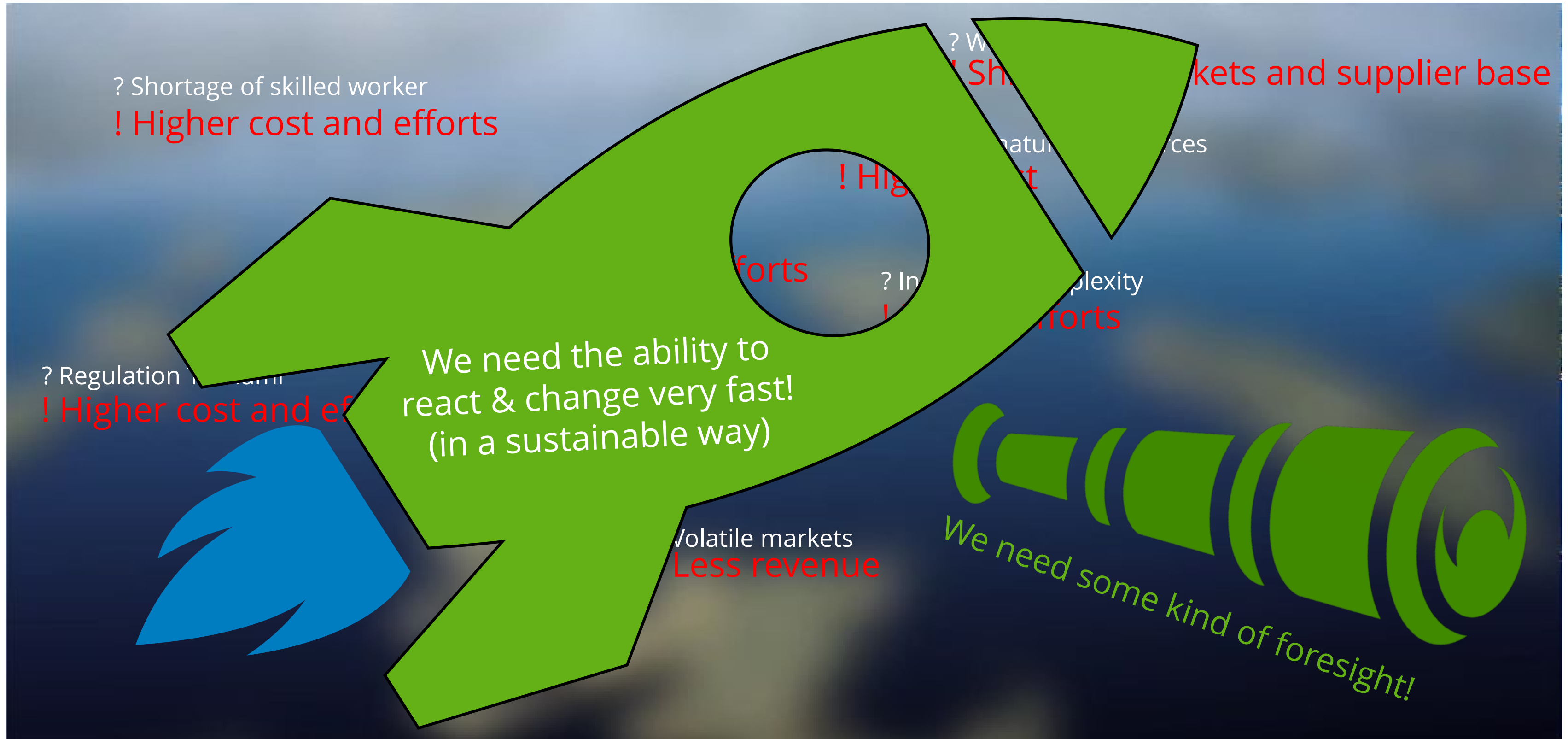
? Increased Complexity

? Regulation Tsunami

? Volatile markets

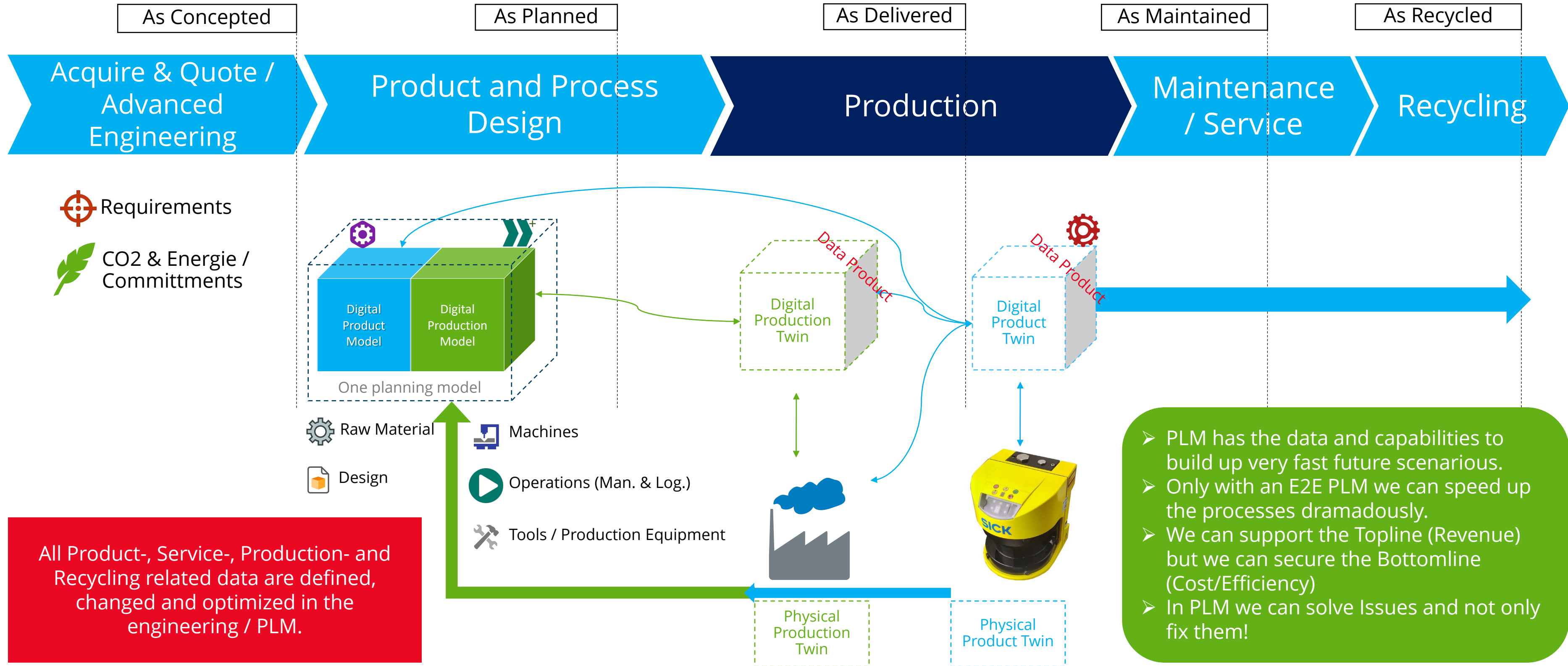
# What do we see looking into the future?

Navigating a fleet in a complex environment IN FOG!



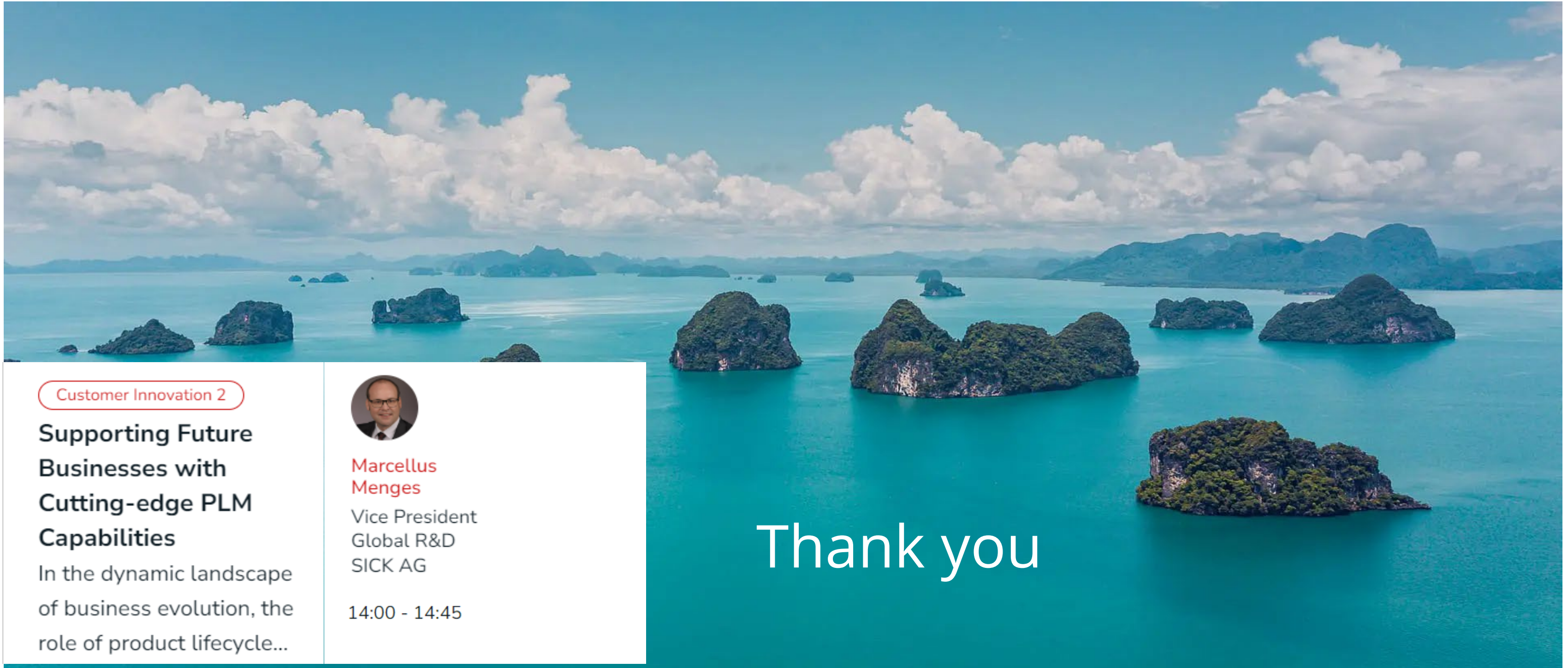


# Why PLM can change it!



# Join my session!

Clear Future Through PLM!



Customer Innovation 2

## Supporting Future Businesses with Cutting-edge PLM Capabilities

In the dynamic landscape of business evolution, the role of product lifecycle...



**Marcellus Menges**

Vice President  
Global R&D  
SICK AG

14:00 - 14:45

Thank you