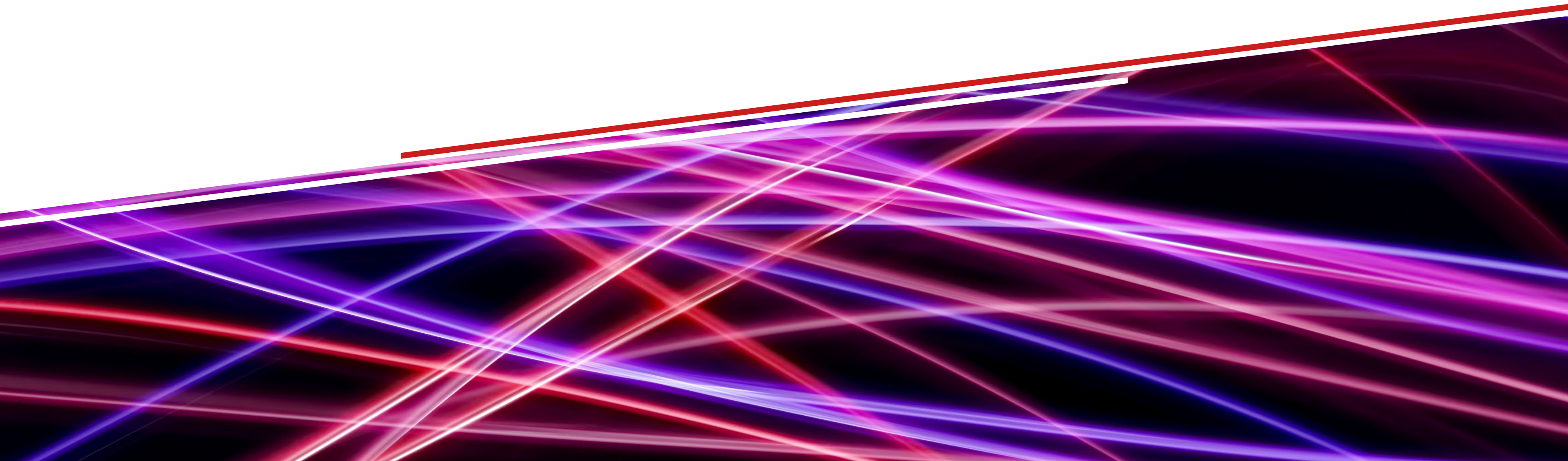


ACE 2024

Data Mastery: Elevate Your Insights with Analytics and Dynamic Dashboards

Matteo Nicolich

Director Product Management, Aras

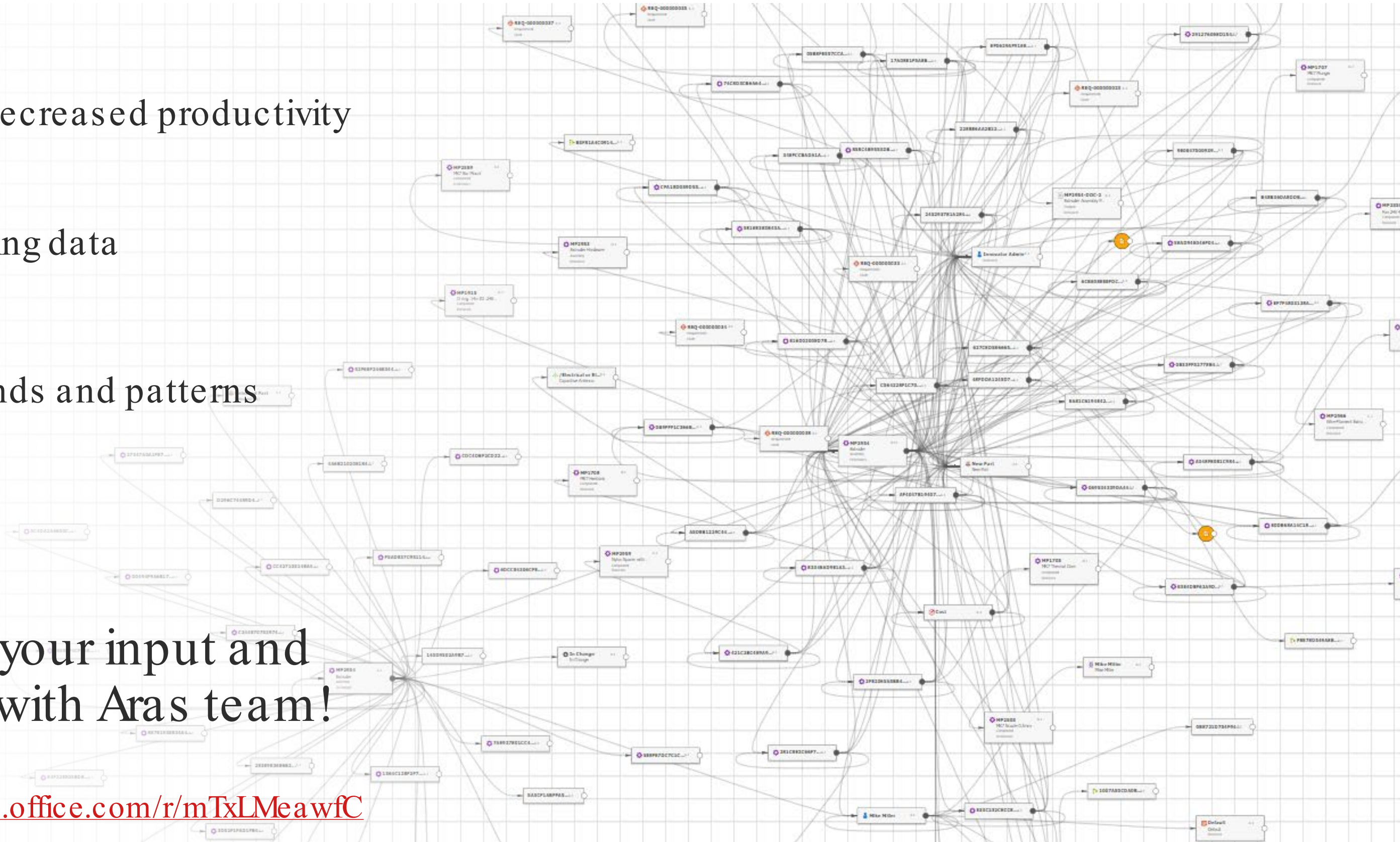


Challenges of Exploring PLM data effectively

Data overload leading to decreased productivity

Lack of context in presenting data

Difficulty in identifying trends and patterns



Provide your input and engage with Aras team!

<https://forms.office.com/r/mTxLMeawfC>

A Dashboards and Reporting Solution Based on Aras Innovator

Revolutionizing user's interaction with Aras Innovator



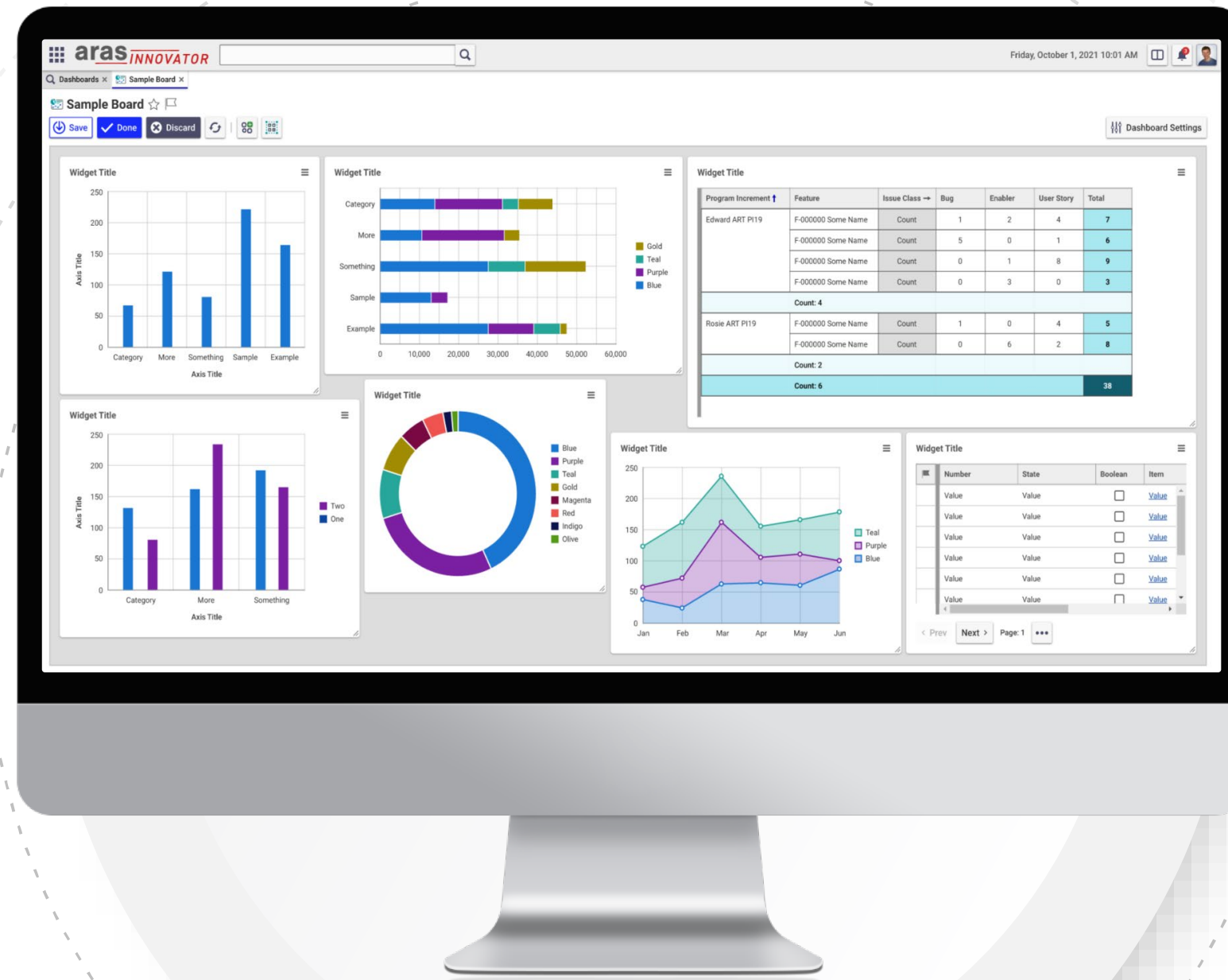
Seamless UX

easy to use with smart user interaction



Turn data into valuable insights

Monitor information and act



Consistent Security Model

Keep data in the controlled source system



Save Time

Access key product performance metrics

Configurable Dashboards in Aras Innovator

- Aras Dashboards contain interactive Widgets for viewing and navigating data
- Low-code / no-code platform feature for all users
- Users can easily:
 - Add Widgets they want to see
 - Choose the data displayed
 - Design the layout with drag & drop
- Admins can create reusable Widget Templates to help users get started even faster

The screenshot displays the Aras Innovator user interface. At the top, there is a navigation bar with the 'aras INNOVATOR' logo and a search bar. Below this, a breadcrumb trail shows the user is in 'My Personal Tasks'. The main content area is divided into several sections:

- Projects Table:** A table with columns for Project Number, Name, Scheduled Start, Scheduled Due, Status, and progress bars for Phases 1 through 9. The first row shows a project with 100% completion in Phases 1, 2, and 3.
- My Tasks Table:** A table with columns for ID, Type, Source Item, Activity, Start Date, Due Date, Status, Assigned To, and Instructions. It lists three workflow tasks related to reviewing deviations, rework orders, and NCRs.
- Project Details Panel:** A hierarchical view of a project named '1922 Printer Modification'. It shows a tree structure with phases and tasks, each with a percentage complete. For example, 'Phase 1 - Plan and Define Program' is 100% complete, while 'Phase 2 - Product Development' is 80% complete.

Data presentation and exploration services in Aras Innovator

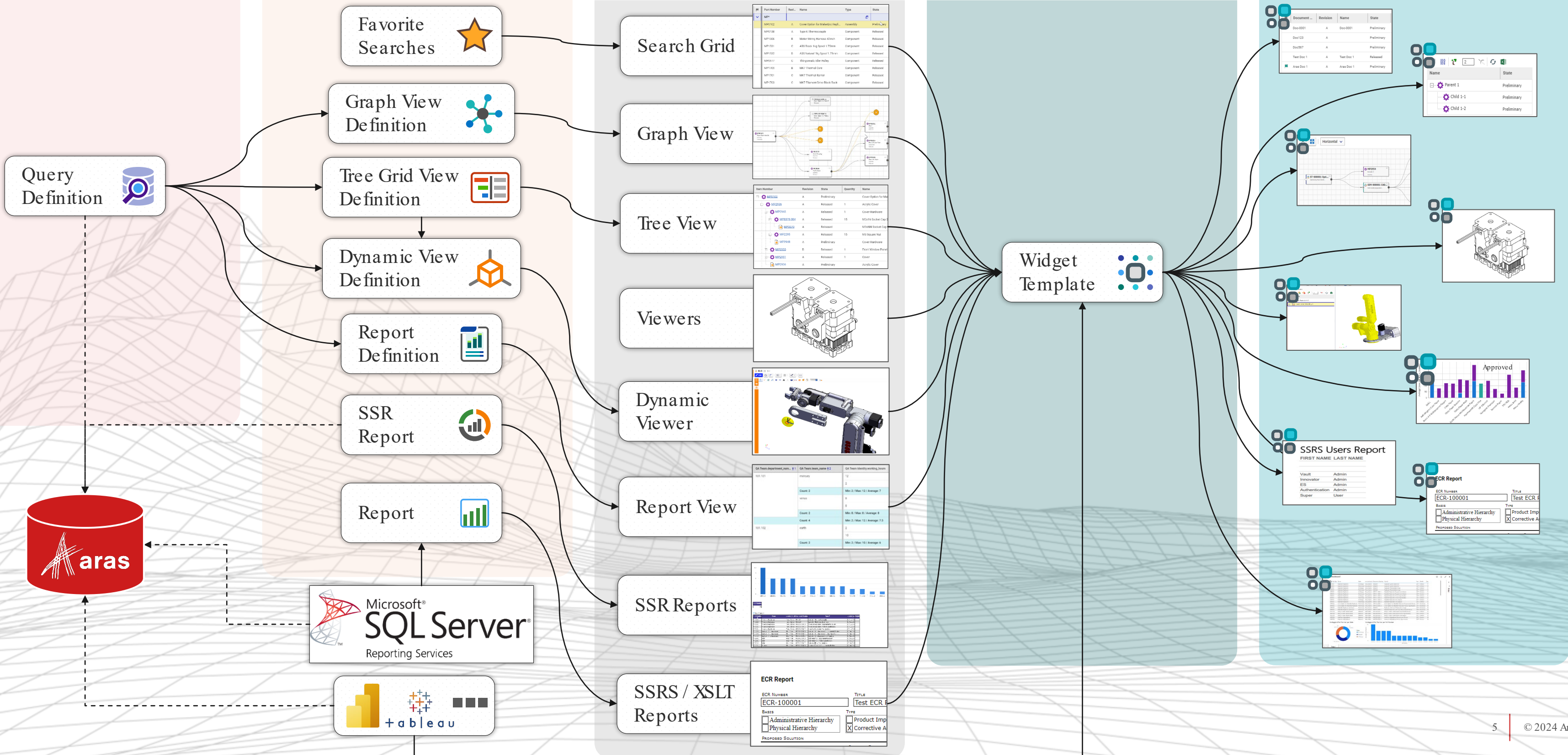
Data Extraction

Data Preparation

Single Window Display
Main Tab | Sidebar | Rel. Tab

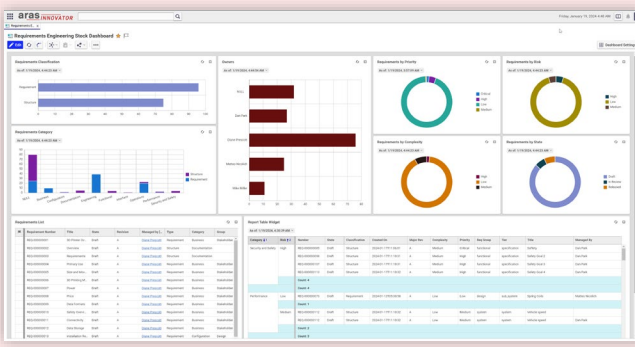
Reusable Components

Configurable Dashboards



Reporting capabilities in Aras Innovator

Aras Reporting



End-user oriented, easy-to-use UI

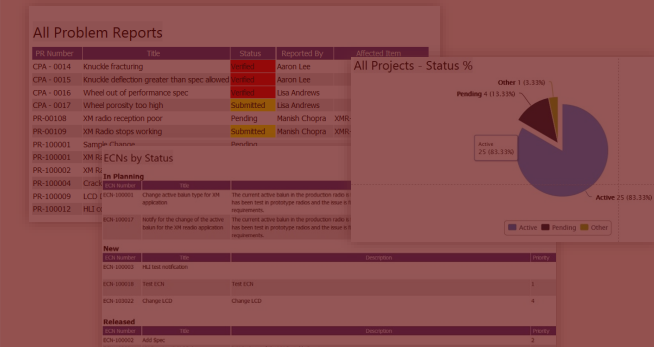
No specialist database knowledge or access privileges required

Aras Security

No Data limitations

HTML, Excel

SSR



End-user oriented, easy to use wizard interface

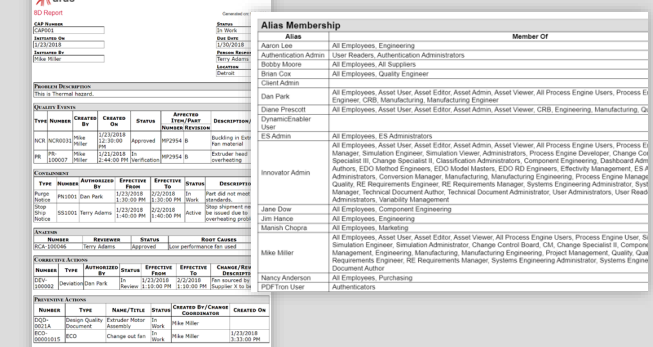
No specialist database knowledge or access privileges required

Aras Security

Some limitation in data extraction

PDF, Word, Excel or XML

XSLT



Admin, developer oriented

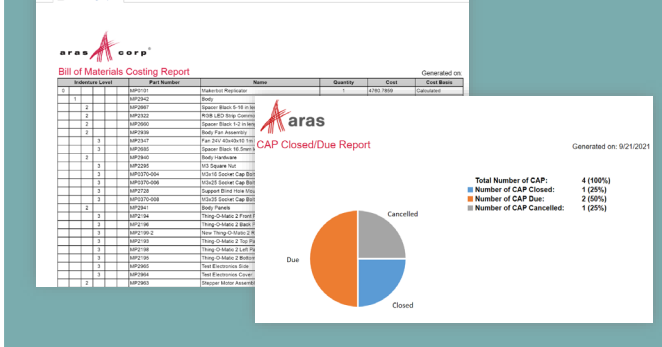
AML and XSLT knowledge required

Aras Security

Some limitation in data extraction

HTML output format only

SSRS



Admin, developer oriented

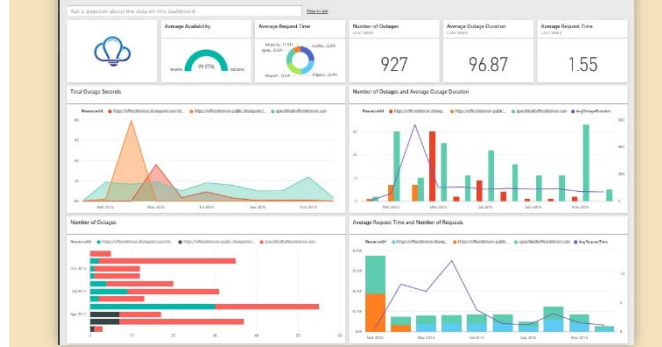
Specialist database knowledge required

NO Aras Security

Some limitation in data extraction

Multiple output formats

PowerBI / Other BI



Admin, developer oriented

Special skills required

NO Aras Security

Some limitation in data extraction

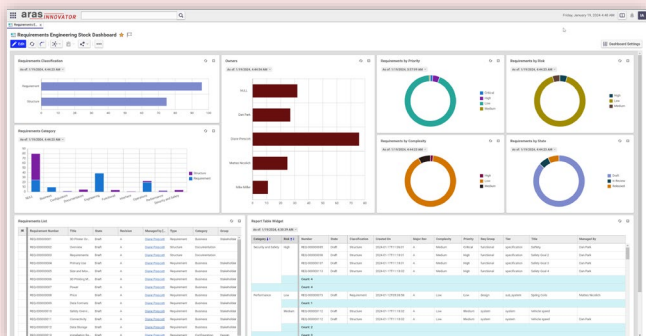
Multiple output formats



Starting from R31 SSR will be discontinued

Reporting capabilities in Aras Innovator

Aras Reporting



End-user oriented, easy to use interface

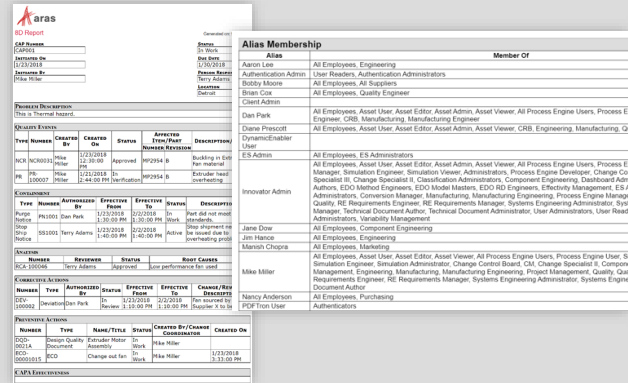
No specialist database knowledge or access privileges required

Aras Security

No Data limitations

HTML, Excel

XSLT



Admin, developer oriented

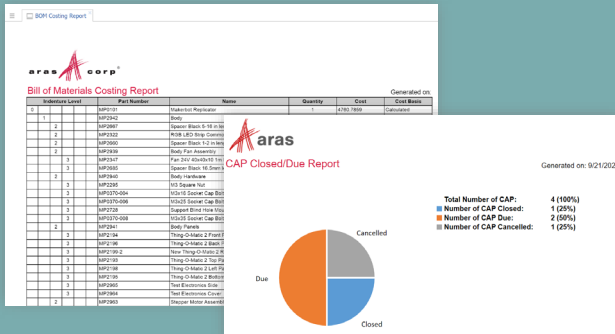
AML and XSLT knowledge required

Aras Security

Some limitation in data extraction

HTML output format only

SSRS



Admin, developer oriented

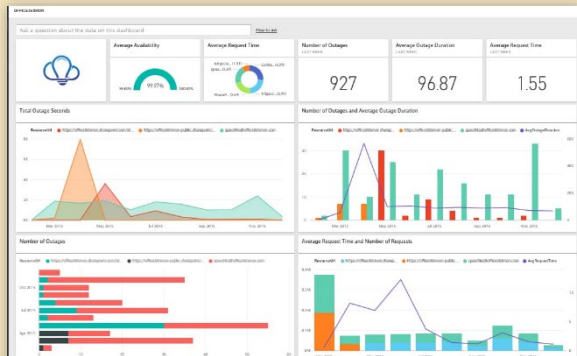
Specialist database knowledge required

NO Aras Security

Some limitation in data extraction

Multiple output formats

PowerBI / Other BI



Admin, developer oriented

Special skills required

NO Aras Security

Some limitation in data extraction

Multiple output formats

Aras Reporting Incremental Release

SIMPLE

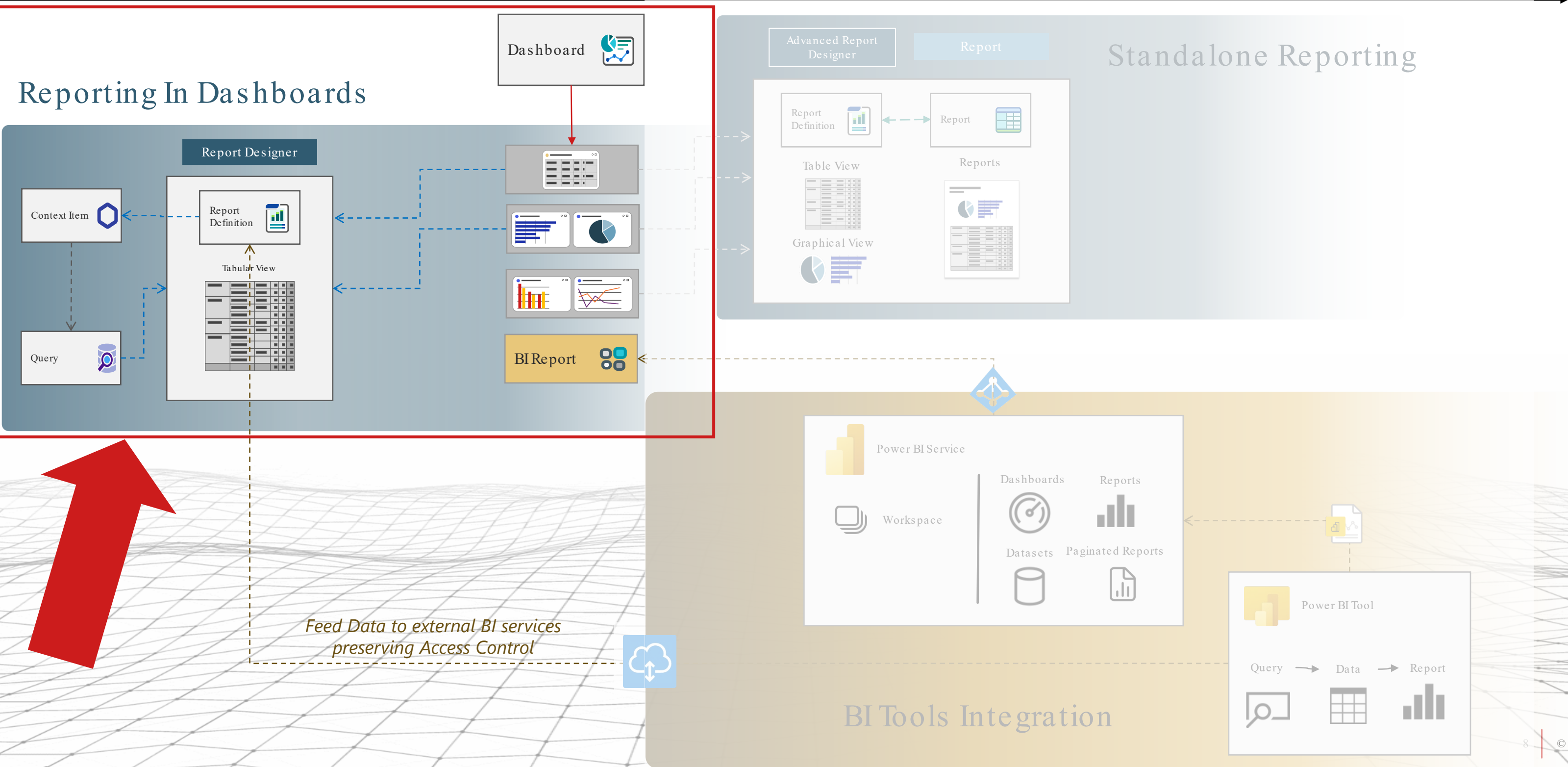
DATA TRANSFORMATION

Advanced Reporting and Presentation

SELF SERVICE

Required Knowledge

EXPERT USER





DEMO

ACE 2024

NEW Aras Reporting Platform Component

Keeps data in the source system

Security Maintained

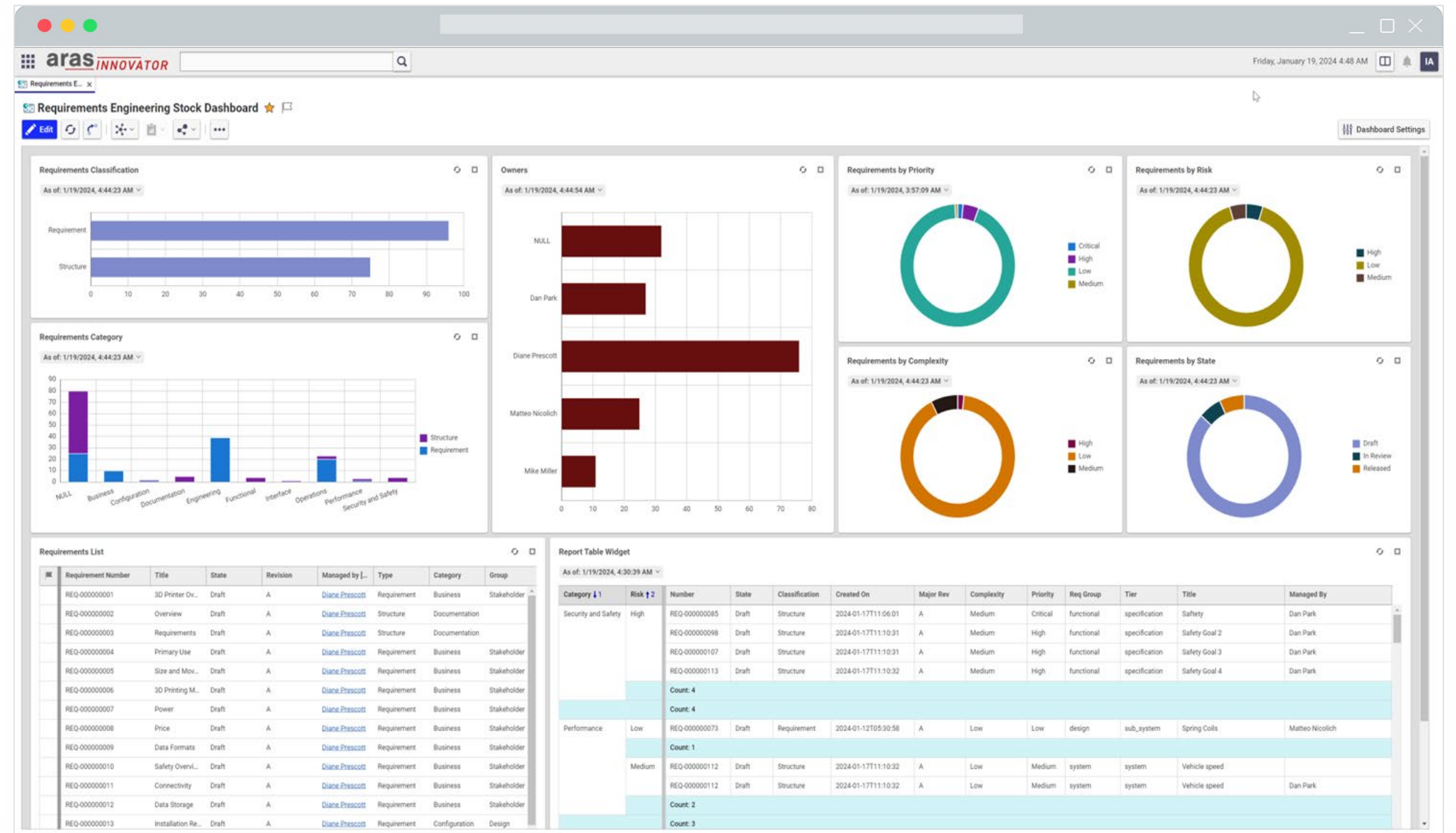
Easier report creation

Data based on Business Rules

Any BOM configuration

Configurable Views

Live and Scheduled Reports



Q&A



Provide your input and
engage with Aras team!

<https://forms.office.com/r/mTxLMeawfC>

ACE
2024



Provide your input and engage with
Aras team!

<https://forms.office.com/r/mTxLMeawfC>

Want more information

Matteo Nicolich | mnicolich@aras.com

ACE
2024