

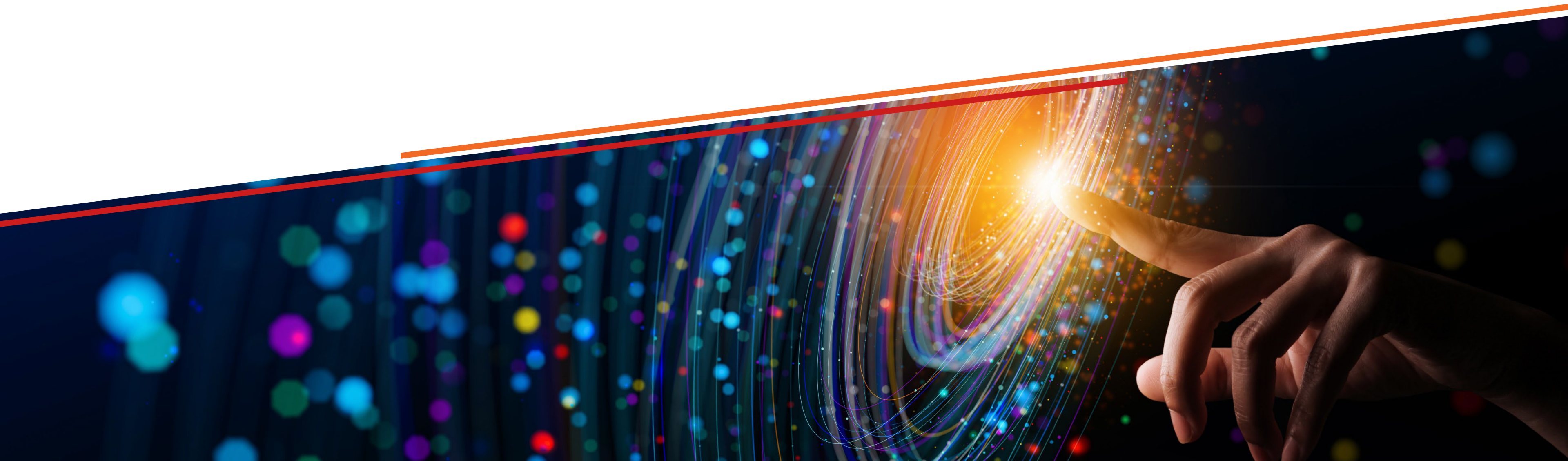
ACE23

REIMAGINE YOUR POSSIBILITIES

How to Migrate to SaaS

Darryl Poore

Wednesday - May 3rd 2023



Summary

- Overview
- Preparation
- SaaS Onboarding
- Existing Instance Discovery
- Journey by Phase
- Aras DevOps
- Aras SaaS Managed Services



Migration Process

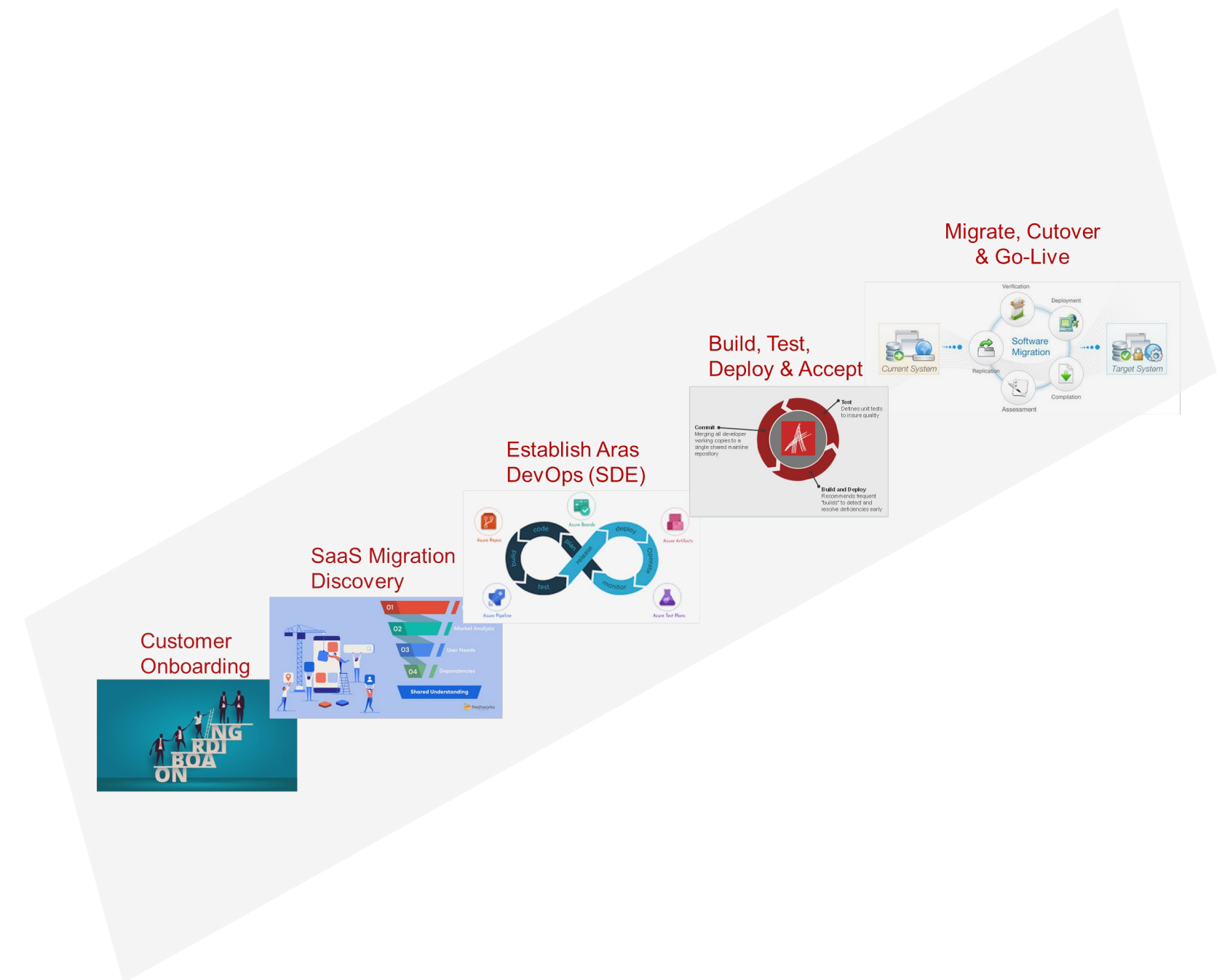
ACE23

REIMAGINE YOUR POSSIBILITIES



Overview

- SaaS Onboarding
- SaaS Migration Discovery
- Aras DevOps
- Aras Innovator Instances
 - Build, Configure, Test, & Deploy
 - Extend Access to Customer
 - Customer Test and Accept
- Migrate
- Cut Over



Migrating to Aras Enterprise SaaS

Preparation

- Formation of Core Team
- Detailed Infrastructure Diagram
- Site-to-Site VPN
- Points of Integration with Approach
- End-to-End Test Scripts
- Identify Sample Data
- Data Volumetrics
- Advance Questions
- etc.



Migrating to Aras Enterprise SaaS (cont.)

SaaS Onboarding

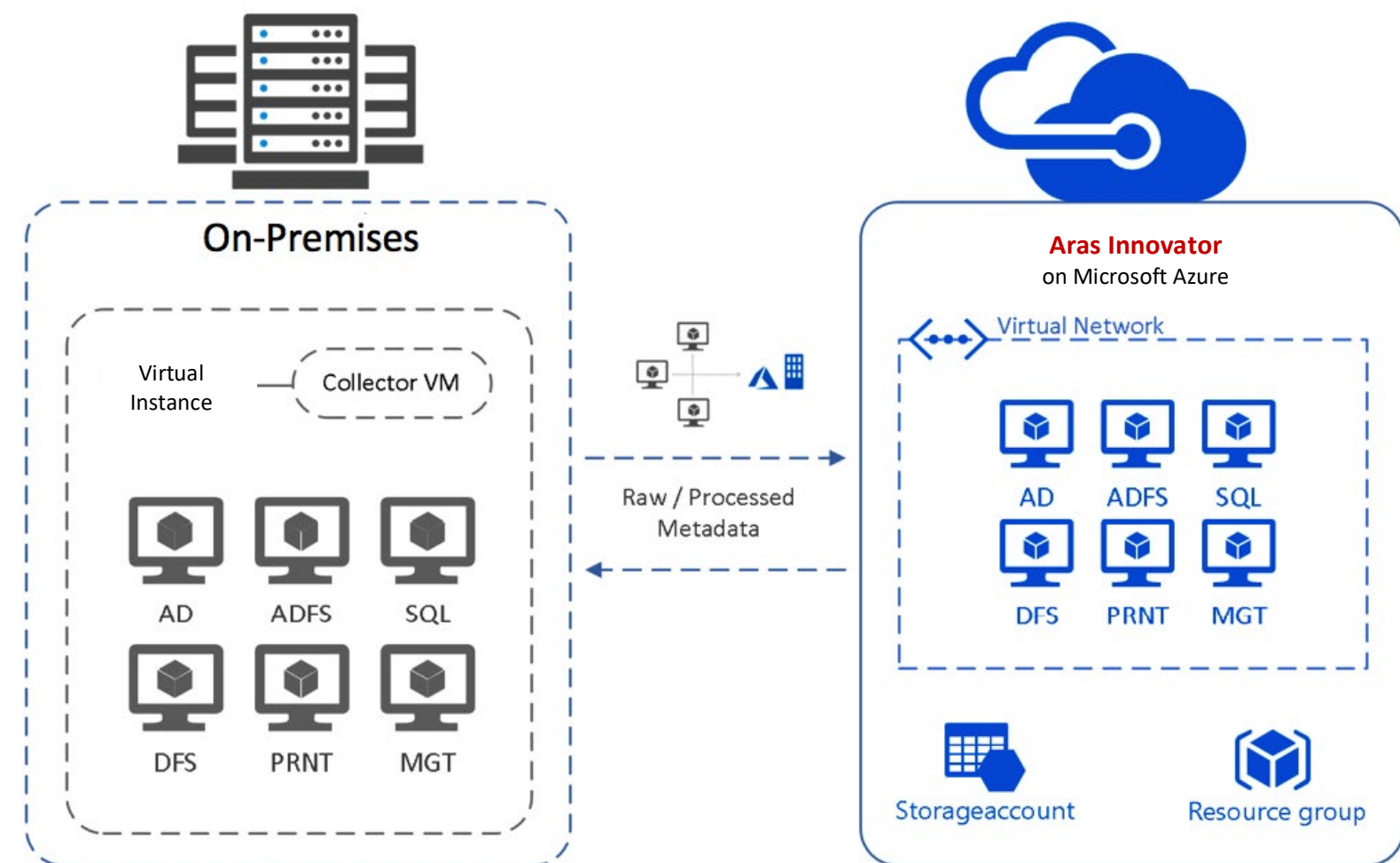
- SaaS Overview
- Essential Items
- What to Expect
- Shared Responsibilities
- Change Management (within SaaS)
- Support



Migrating to Aras Enterprise SaaS (cont.)

Existing Instance Discovery

- Current State
 - Version and Service Pack of Aras Innovator
 - Infrastructure
 - Systems Integrations
 - Connected / Dependent Activities
 - & More
- Future State
 - Migration Planning
 - Target Dates
 - CI/CD Configuration
 - Testing Assistance (example script)
 - More . . .

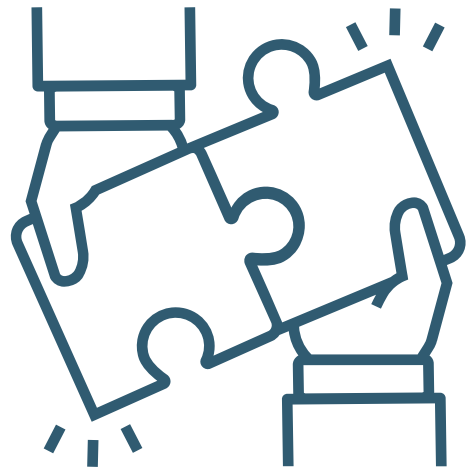


Migrating to Aras Enterprise SaaS (cont.)

Discovery Structure

- Multiple Sessions
- Field Guide Questions
 - Infrastructure
 - Integrations
 - Data Migration
 - Testing
 - Other
- Discovery Summary Document

COLLABORATION



EXCHANGE

REACH GOALS



COMMUNICATION



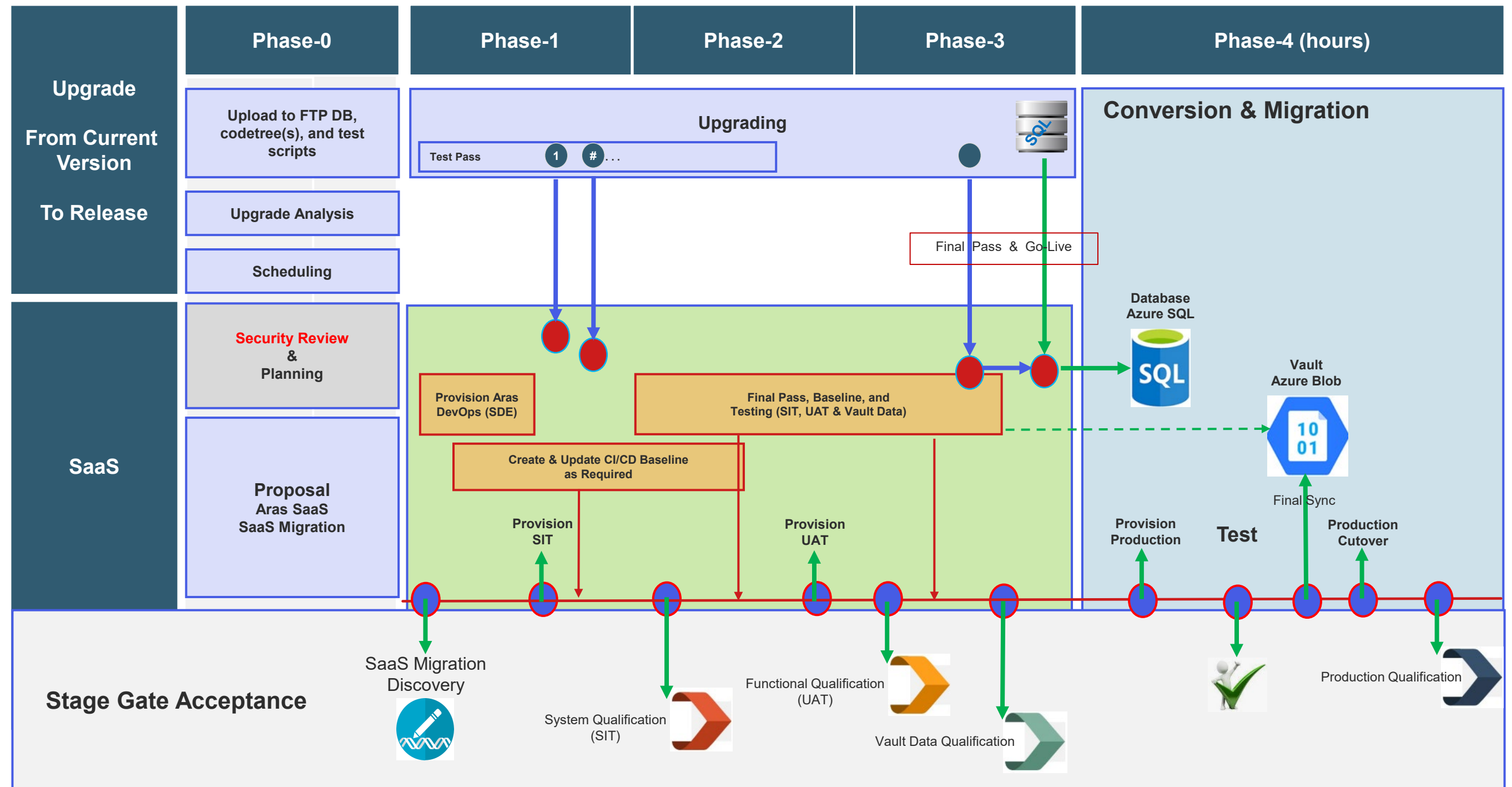
Migrating to Aras Enterprise SaaS (cont.)

Journey by Phase

Concurrent workstreams to optimize timeline



- Upgrade as-is version to the latest compatible version
- Build new SaaS environment



Milestones

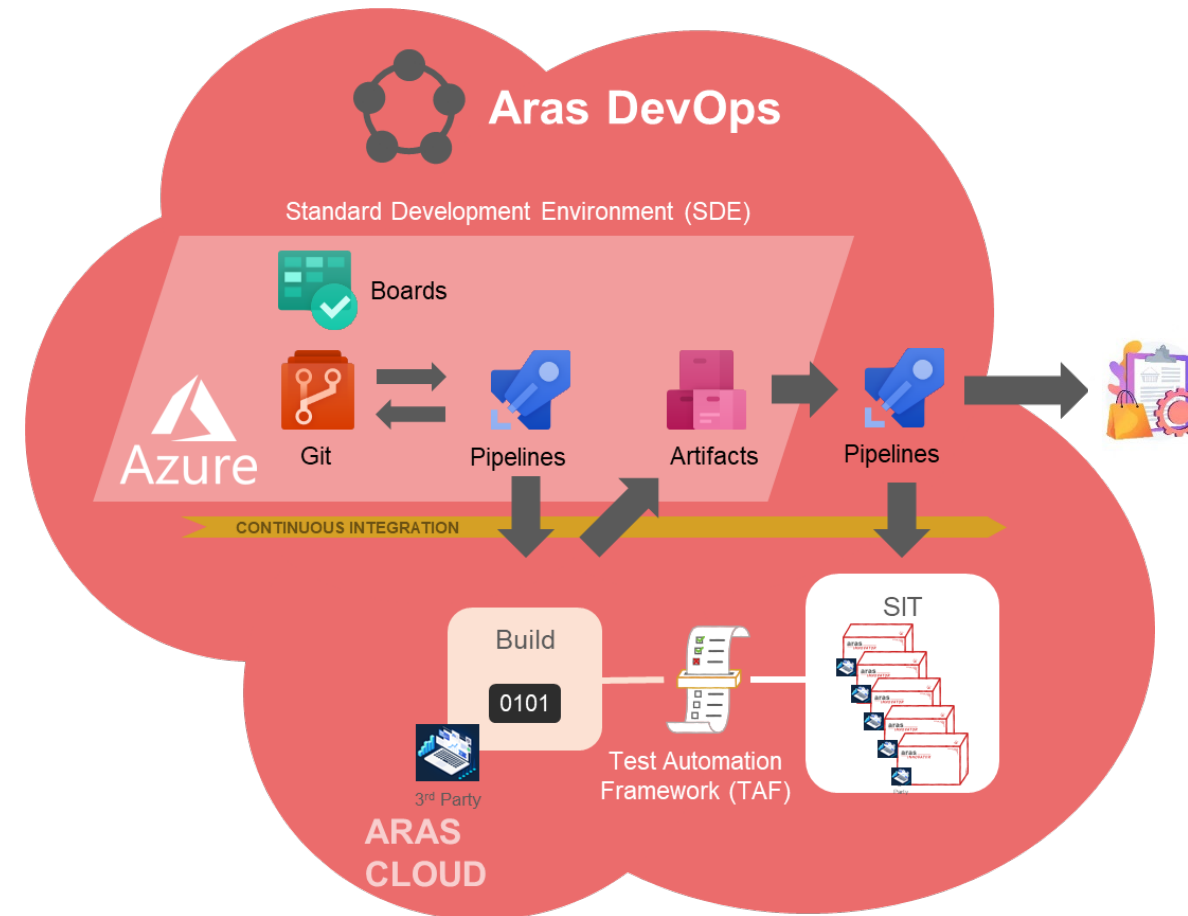
- ✓ System Qualification
- ✓ Functional Qualification
- ✓ Data Qualification
- ✓ Production Qualification

Migration Process (cont.)

Aras DevOps

Aras DevOps (SDE) is built on Microsoft's Azure DevOps, a Microsoft product providing version control, reporting, requirements management, project management, automated builds, testing and release management capabilities. It covers the entire application lifecycle and enables DevOps capabilities.

Aras DevOps (SDE) is set up in the Microsoft Azure Cloud and maintained by Aras.



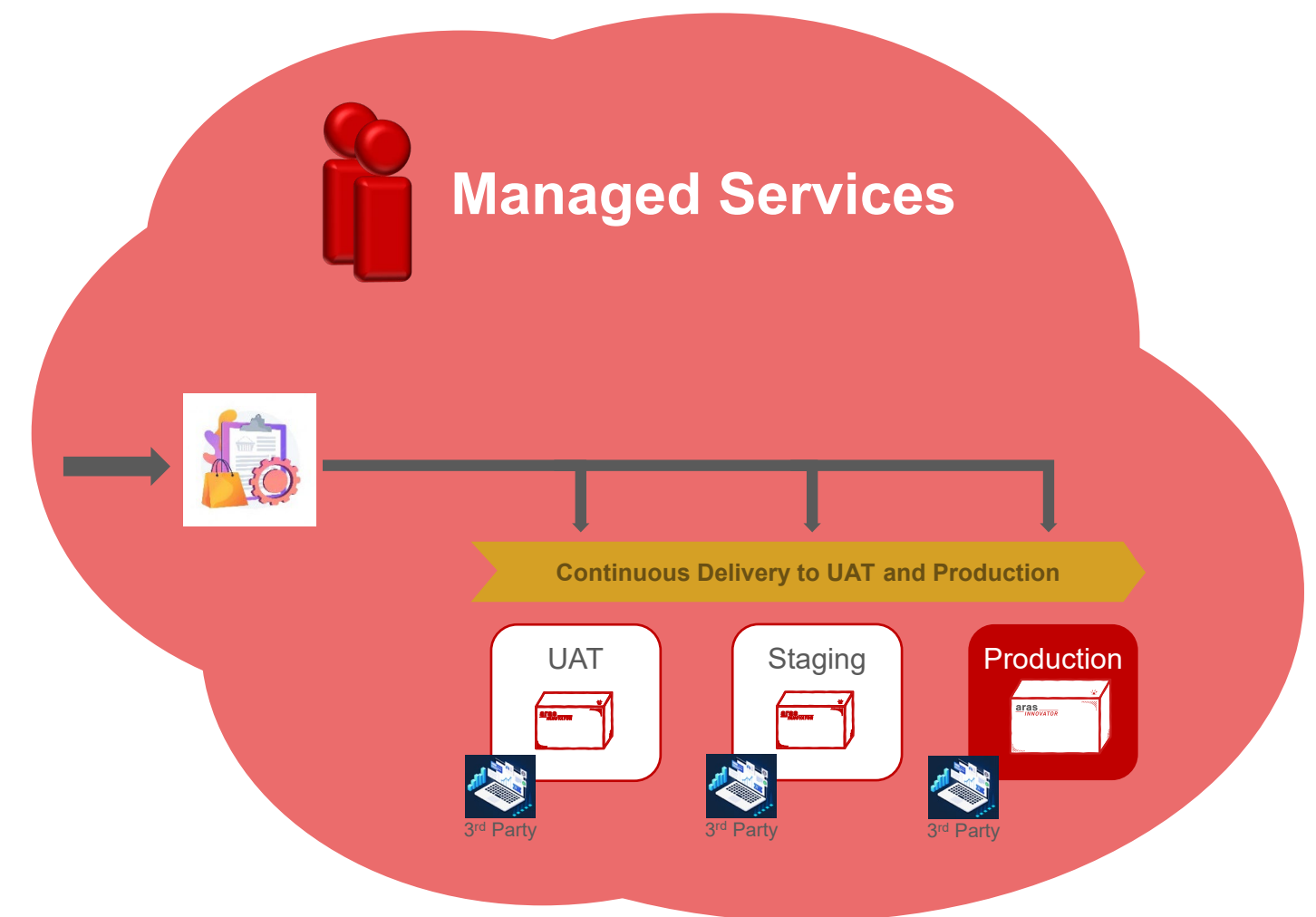
- **Aras Innovator – SIT Instance**
 - Build, Config, Test, & Deploy
 - Integrations – Configure, Test, & Deploy
 - Testing of Vault Data Migration
 - Customer Testing & Acceptance

- **Aras Cloud** environment for Continuous Integration (CI)
 - Set up and maintained by Aras
- Includes **Standard Development Environment (SDE)**
 - Environment to commit, build and test customizations of Aras
 - Build & SIT (QA) Environments
 - Tools, code template, and processes
- Includes **Test Automation Framework (TAF)**
 - Aras Innovator specific APIs layered on top of industry standard testing frameworks
- Supports several approaches to **Continuous Delivery (CD)**

Migrating to Aras Enterprise SaaS (cont.)

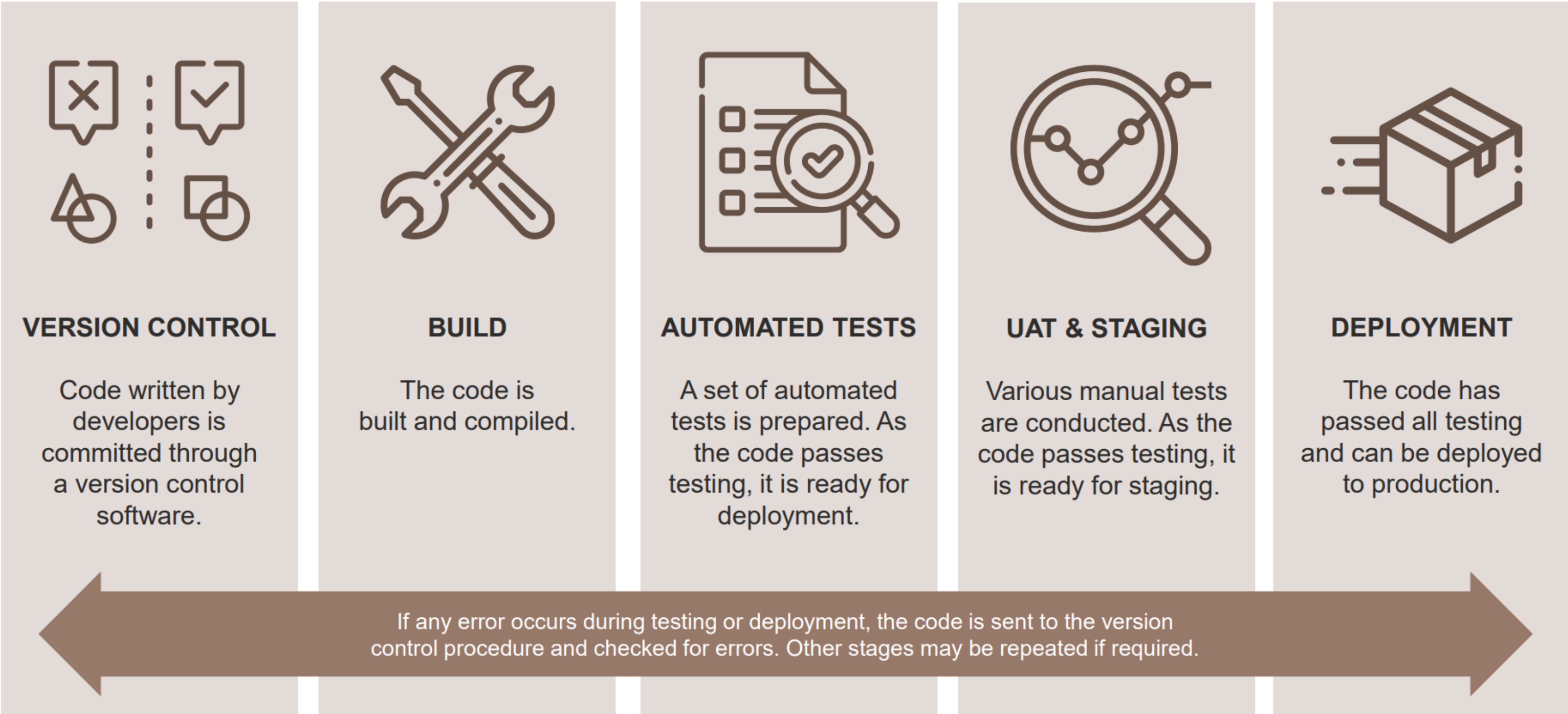
Provision & Deploy

- User Acceptance Testing (UAT) ➤
- Final Conversion
- Final Data Migration (delta / diff) ➤
- Final Testing
- Production Cutover ➤



Migrating to Aras Enterprise SaaS (cont.)

Change Management



Migrating to Aras Enterprise SaaS (cont.)

Recap

- Migration Process
- Preparation & Onboarding
- Journey
- Structure of the Aras Cloud

